



TYPE: AWLL



AWLL Aluminium Wireless Load Link

Description

The LCM AWLL load link series have been designed for lifting and weighing in harsh environments. Being manufactured from aluminium alloy to minimise weight also makes them ideal for mobile use, and steel brushed holes provide added wear protection from the industry standard shackles they have been designed for use with. They are ideal for proof testing structures, monitoring loads on hoists and rigging, line tension/bollard testing and weighing suspended loads on cranes.

The wireless antenna is internally mounted, protecting it from accidental damage during use and handling. The AWLL range also uses standard AAA alkaline batteries, which are readily available and low cost. They are Simple to install and have a high safety factor (5:1) to provide safe and accurate measurements during critical lifting operations.

The AWLL is supplied as standard without any additional wireless devices to enable greater flexibility with the configuration and ordering of the product. The AWLL can be used with any of the T24 range of wireless instrumentation, whether this be for a simple display system using the T24-HS-LS, or more complex systems using multiple load cells and multiple wireless devices.

For more sophisticated systems, including datalogging or monitoring/reporting requirements, we are able to offer a robust tablet PC with installed software for use with single or multiple load cell installations. Our sales team will be happy to discuss the best wireless system configuration to suit your requirements.

Specification

Rated load (tonnes)	5, 12, 25, 50, 100, 200, 300
Proof load	200% of rated load
Safety factor	>500% of rated load
Accuracy	<±0.25% of reading
Power supply	2 x AAA alkaline batteries
Battery life	>300 hours (continuous use, with 1.2Ah batteries)
Transmission range	>300 metres (clear line of sight)
Radio frequency	2.4GHz
Update Rate	3 times per second
Operating temperature range	-20 to +50°C
Compensated temperature range	-10 to +50°C
Zero temperature coefficient	<±0.01% of rated load/°C
Span temperature coefficient	<±0.01% of rated load/°C
Environmental protection level	IP65

Available Options

- Wireless overload alarm module
- Wireless base station with analogue output
- Wireless signal booster
- Multiple wireless load cell controller software
- Wireless slave display
- Crosby shackle supply

Features

- Ranges from 5 to 300 tonnes
- Lightweight aluminium construction
- High accuracy
- Supplied with carry case
- License Free 2.4GHz radio
- Internal antennae
- 300 hours battery life using standard AAA batteries
- Can be supplied with various bespoke telemetry and/or software packages

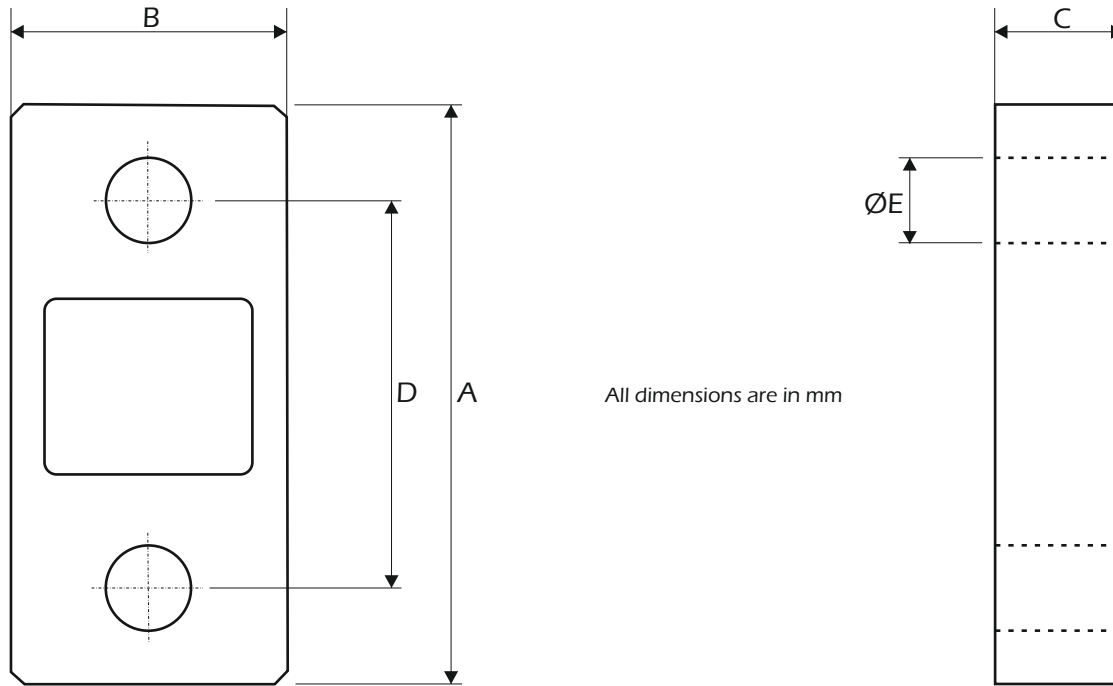
Typical Applications

- Underhook crane weighing
- Cable tension monitoring
- Crane/hoist proof loading
- Water weights calibration
- Warehouse despatch weighing



AWLL Aluminium Wireless Load Link

Dimensions



All dimensions are in mm

Rating (tonnes)	A	B	C	D	ØE	Resolution (tonne)	Weight (kg)
5	250	95	35	170	27	0.001	6
12	290	101	50	180	48	0.002	7
25	320	127	55	200	55	0.005	9
50	430	152	75	250	76	0.01	15
100	600	265	100	320	100	0.05	50
200	700	325	150	350	146	1.1	95
300	800	375	200	420	162	0.1	170

Compatible Load Shackles

Rating (tonnes)	Crosby Load Shackles	Van Beest Load Shackles	GN Rope Load Shackles
5	6.5te Crosby G-2130	6.5te Green Pin G4163	6.5te GN Rope H9
12	12te Crosby G-2130	12te Green Pin G4163	12te GN Rope H9
25	25te Crosby G-2130	25te Green Pin G4163	25te GN Rope H9
50	55te Crosby G-2130	55te Green Pin G4163	55te GN Rope H9
100	120te Crosby G-2130	120te Green Pin P6036	120te GN Rope H10 Super
200	200te Crosby G-2140	200te Green Pin P6036	200te GN Rope H10 Super
300	300te Crosby G-2140	300te Green Pin P6036	300te GN Rope H10 Super

A summary of available wireless devices that can be used to enhance the AWLL in your application can be viewed on the next page of this datasheet.

For further assistance on system configuration, please call us or email your requirements to sales@lcmssystems.com.

AWLL Aluminium Wireless Load Link



Wireless Receivers/Display Options



T24-HS-LS
Simple wireless display for connecting to 1 load cell



T24-HA
Wireless display for connection to up to 12 load cells



T24-HR
Wireless display for connecting to multiple load cells



X24-HD
ATEX Wireless display for connection to up to 24 load cells

Wireless Base Station Options



T24-BSu
Wireless USB connected base station



T24-Bsd
Wireless compact USB connected base station



T24-BSue
Wireless USB extended range base station



T24-BSi
Wireless USB, RS485, RS232 connected base station

Wireless Output Module Options



T24-RM1
Wireless relay switch output module



T24-SO
Wireless serial ASCII output module



T24-AO1
Wireless analogue output module



T24-PR1
Wireless surface mounting tally roll printer



T24-AR
Wireless range extender repeater module

Wireless Software Options



LCM Systems are able to offer various software solutions for our wireless range of load cells. We encourage you to speak to our sales team to discuss any standalone software requirements you may have.

The solutions we regularly offer include centre of gravity weighing and reporting, multiple load cell display & reporting and PC based datalogging. Other solutions can also be offered.

For more detailed information regarding wireless instrumentation visit www.lcmsystems.com/T24

www.lcmsystems.com

LCM Systems Ltd

Unit 15, Newport Business Park, Barry Way
Newport, Isle of Wight PO30 5GY UK

Tel: +44 (0)1983 249264

sales@lcm systems.com

www.lcm systems.com

LCM Systems (România)

Strada Ștefan Cel Mare 26a,
Tunari, cod.077180, Ilfov, România

Tel: +40 (0)77 4641899

ro@lcm systems.com

www.lcm systems.ro

Due to continual product development, LCM Systems Ltd reserves the right to alter product specifications without prior notice.

Issue No. 1

Issue date: 08/11/2021

APPROVED

(unapproved if printed)